



ASCENT

AT THE PHOENICIAN®

CAMELBACK RESIDENCES

PRESENTED BY




Russ
Lyon

Sotheby's
INTERNATIONAL REALTY

WELCOME TO ASCENT.
A NEW PRIVATE LUXURY COMMUNITY
ADJACENT TO THE PHOENICIAN® IN SCOTTSDALE.



A wide-angle landscape photograph capturing a sunset over a golf course. In the foreground on the left, a large, iconic saguaro cactus stands prominently. The middle ground is dominated by a lush green golf course with several sand traps and a winding path. The background shows a sprawling cityscape under a golden sky, with distant mountains visible on the horizon. The overall mood is serene and picturesque.

Tucked at the base of revered Camelback Mountain, overlooking beautiful vistas and landscapes, Ascent is a new private gated residential enclave adjacent to The Phoenician® – one of Arizona’s premier luxury resort destinations.

- THE PHOENICIAN®**
- 1 Hotel Lobby
 - 2 The Marketplace
 - 3 J&G Steakhouse
Mowry & Cotton
Thirsty Camel
Afternoon Tea
 - 4 Golf Clubhouse
 - 5 Golf Course
 - 6 The Tavern
 - 7 19th Hole
 - 8 The Phoenixian® Spa
 - 9 Cactus Garden
 - 10 Athletic Club

MOUNTAINSIDE RESIDENCES

THE MOUNTAIN CLUB

CAMELBACK RESIDENCES

BUILDING B

BUILDING A

GATED ENTRY

GOLF VILLAS

5-minute drive to
Old Town Scottsdale

CACTUS GARDEN TRAIL

Illustrative map conceptual only.

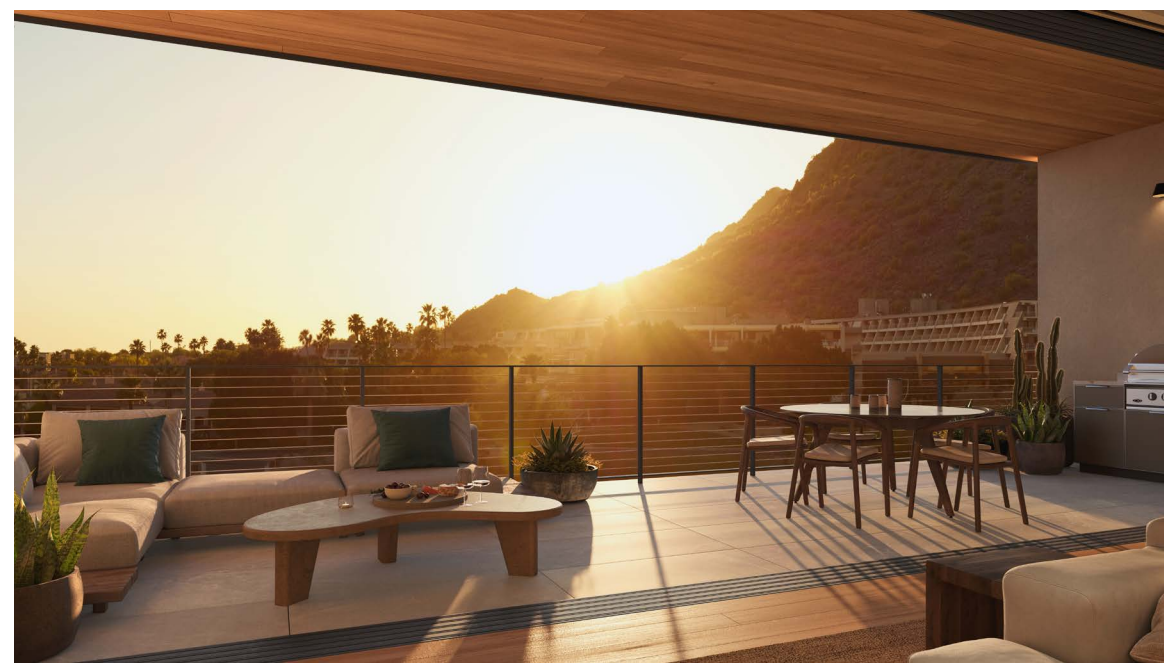
CAMELBACK RESIDENCES
NOW SELLING



ELEVATED LIVING IN SCOTTSDALE

This collection of 60 condominium residences adjacent to the luxurious Phoenician® and steps from Camelback Mountain present a new level of luxury living for Scottsdale.

ARCHITECTURAL BEAUTY IN THE DESERT



Modern and spacious, and mere steps from the luxurious Phoenician® Resort, Ascent's Camelback Residences command Scottsdale's most coveted location at the base of iconic Camelback Mountain.

Enjoy effortless living in all seasons with open spaces that flow seamlessly between the indoors and outside.



HIGH LUXURY

Live with a sweeping panorama of the valley, landscaped gardens, and mountains. Ascent Camelback Residences are designed with seamless open concept living with floor to ceiling glass to maximize natural light and views.

KITCHENS BY BULTHAUP

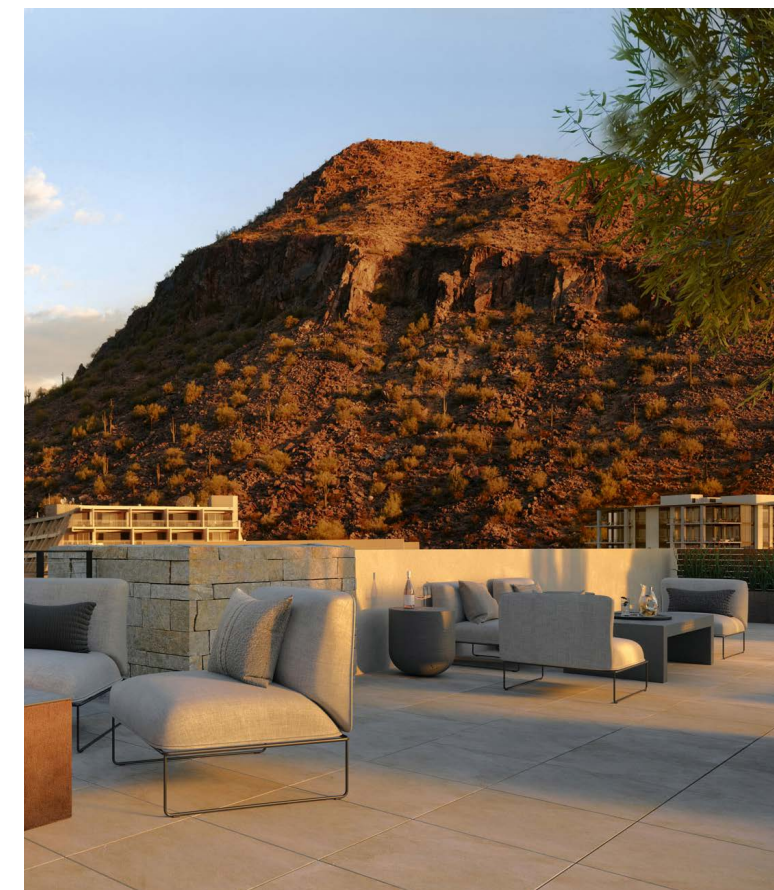
Exquisite bulthaup kitchens blend form and function, exemplifying precision modern design while evoking a warm, inviting ambiance.



As an Ascent condominium homeowner, you collaborate directly with a dedicated bulthaup interior designer to customize your kitchen millwork, countertops, cabinetry, accessories, and other finishes.

All images, renderings and specifications on this page are for illustrative and representation purposes only and subject to change without notice. This rendering is representative of a bulthaup Kitchen Option Upgrade Package.

ROOFTOP TERRACE



Designed uniquely for the Camelback Condominium owners, residents will enjoy their own private rooftop community terrace featuring soft seating, fire tables, multiple gathering spaces, and an activity lawn.

Enjoy dramatic sunrises and sunsets overlooking the scenic valley, and stunning Camelback Mountain.

FEATURES + SPECIFICATIONS

FEATURES + SPECIFICATIONS

Overview

- › A collection of 60 luxury condominiums in Scottsdale's most desired location adjacent to The Phoenician®
- › Plans range from one bedroom plus den to three bedroom plus den
- › Desert contemporary architecture integrating use of natural materials and modern design
- › An award-winning design team of Nelsen Architects, Vallone Interior Design, Floor Associates Landscape, and bulthaup Scottsdale
- › Developed by Replay Destinations – renowned for creating luxury destinations and communities that immerse homeowners in a rich array of playful, social and active experiences

Amenities

- › Intimate residential lobby with front desk, soft seating area, and commissioned art wall
- › Private rooftop terrace that provides 360-degree views of the Valley and Camelback Mountain with social areas, fire tables, and an activity lawn
- › The Mountain Club is a private club for owners at Ascent offering programs, amenities and private events. Amenities include the private pool, fitness and movement rooms, social spaces, and private dining room for culinary gatherings
- › 24-hour private gate and guardhouse at entry to Ascent community
- › Public amenities of the adjacent Phoenician® Resort – enjoy numerous culinary experiences within the hotel and resort golf at the new Phoenician® Golf Course
- › For a limited time, owners have the opportunity to join the Phoenician® Amenity Access Program – access and privileges including the new Athletic Club, 38,000 square foot spa, tennis facility and resort pools
- › Private access to the Camelback Mountain Cholla Trail

Interior Features

- › Open interiors that flow seamlessly to expansive outdoor living areas for entertaining in style
- › Interior aesthetics by Vallone Design – choice of two color palettes that integrates natural materials with clean lines and colors that blend into the Sonoran Desert landscape
- › Luxury multi-slide door system with moving glass walls to connect main living to outdoor living area
- › Expansive windows to maximize natural light and views
- › Refined wood front door and entry
- › Signature living room fireplace with concrete tile surround and stone hearth
- › 10' ceiling in living and dining areas. 9' ceilings in kitchen and bedrooms
- › 8' solid core interior doors with lever hardware
- › European oak flooring throughout living, dining and kitchen areas
- › Waterworks faucets, fixtures and fittings in kitchens and bathrooms
- › Recessed lighting with dimmers in main living area
- › Roller shades in living area and bedrooms. Prewire of all window locations for motorized shades with a custom automation option through Theater X
- › Spacious outdoor living patios with large format tile



FEATURES + SPECIFICATIONS

Kitchens

- › Exquisite bulthaup kitchens blend form and function while evoking a warm and inviting ambiance
- › Kitchen design anchored by a large kitchen island and wood bar top seating area
- › Designer cabinetry with special finishes that exudes tactile appeal and casual sophistication
- › Selection of ultra-thin bulthaup countertops with integrated Kohler sinks
- › Sub-Zero Wolf appliance package
- › Waterworks kitchen faucet with integrated pull spray (Bond Collection)
- › Cove built-in dishwasher seamlessly integrated into bulthaup cabinetry

Bathrooms

- › Spa inspired bathrooms with earth tone colors
- › Contemporary floating vanities with rift cut oak millwork
- › Quartz countertops and backsplash with Kohler undermount sink
- › Large format floor tile - Cemento Rasato Series in primary bathrooms
- › Showers enclosed in frameless glass with heavy brushed 2"x 2" tile floors
- › Elegant illuminated mirrors in primary and guest bathrooms
- › Free standing sculptural soaking tubs in primary bathrooms
- › Elegant powder room with limestone countertop and backsplash
- › Waterworks plumbing fixtures in primary bathroom, secondary bathroom and powder room (Flyte Collection)
- › Waterworks shower fittings with Thermostatic System (Flyte Collection)



Waterworks

- › With over 40 years of experience, Waterworks brings impeccable style and artisanal craftsmanship to bathrooms, kitchens and discerning spaces worldwide
- › Impeccable quality requires meticulous selection of high-grade materials, Waterworks uses genuine materials to ensure the products' longevity and beauty
- › Waterworks transforms a space through an absolute commitment to design authenticity, innovation and quality
- › Their appreciation for tradition and artistry, combined with applied experience, guarantees mechanical integrity, meticulous craftsmanship and timeless designs
- › Waterworks' Flyte Collection evokes pure Modernism – like minimalist works of art, these elegantly proportioned elements bring sculptural reference to a bath.

The developer reserves the right to make any modifications and/or changes. Dimensions, sizes, specifications, furnishings, layouts, and materials are approximate only and subject to change without notice.

THE MOUNTAIN CLUB
AT ASCENT

PRIVATE OWNERS' AMENITY



FEATURES + AMENITIES

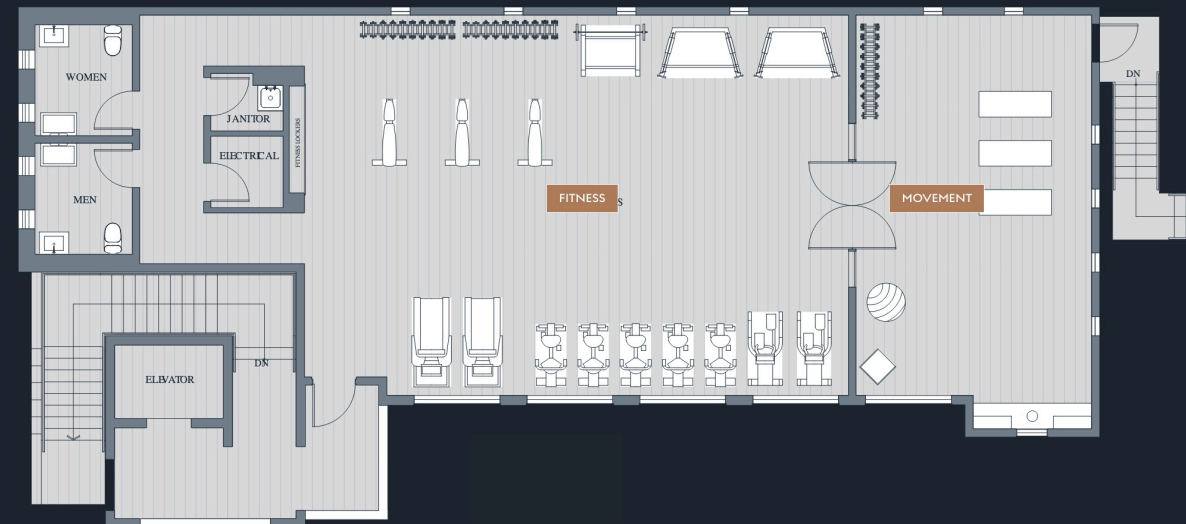
- > Lower Level – Social living room, private dining room, games room, patio, and pool deck
- > Upper Level – Fitness center and movement studio
- > Close proximity to Camelback Mountain with direct access to the new Cholla connector trail



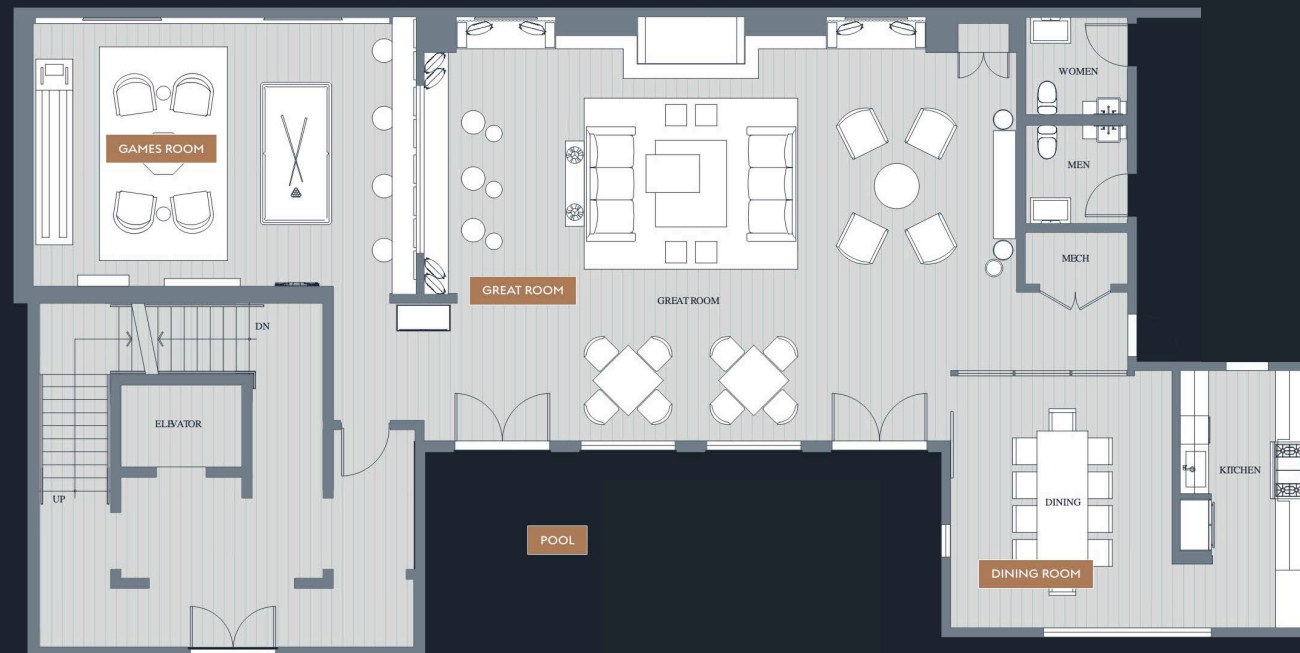
Architecturally designed as a modern interpretation of the historic Jokake Inn, the Mountain Club will be an intimate gathering place for connection, wellness, celebration and relaxation.

ENTERTAINMENT WELLNESS RELAXATION

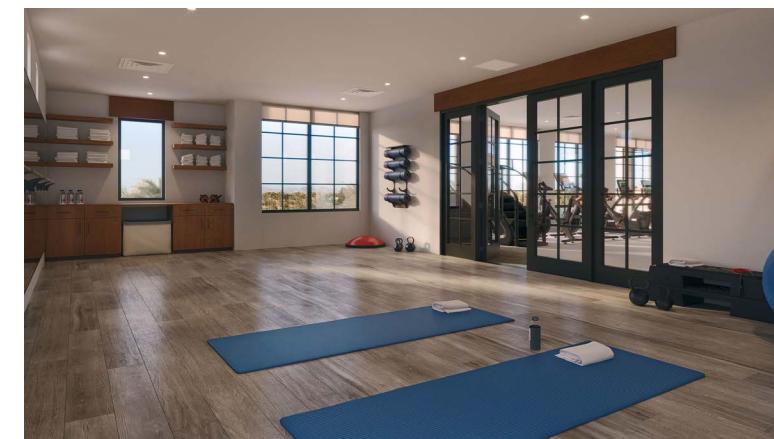
Pursue wellness as an inherent part of each day. Meet friends to stretch before a hike, get in an early morning workout, or practice your yoga routine.



UPPER LEVEL
FITNESS CENTER



MAIN LEVEL AND
POOL DECK



Gather with friends in the Clubhouse to watch golf or play some cards, unwind with drinks in the games room, and relax by the private pool and hot tub with family.

All images, renderings and specifications on this page are for illustrative and representation purposes only and subject to change without notice.

GOLF VILLAS
SOLD OUT

THIRTY GOLF VILLAS



This exclusive enclave of luxury villa homes sold out prior to completion, and construction is underway.

MOUNTAINSIDE RESIDENCES
SOLD OUT

FORTY LUXURY RESIDENCES



The Mountainside residences sold out prior to completion, and construction is underway.

DEVELOPER

REPLAY DESTINATIONS

The Ascent residential community is master-planned and developed by Replay—renowned for creating luxury destinations and communities that immerse homeowners and guests in a rich array of playful, social, and active experiences. Our portfolio includes some of the world’s most sought-after locations, from Half Moon Bay in Antigua to the Rocky Mountains. Whether it is the raw beauty of Hawaii’s Kohala Coast or the idyllic heritage towns of California wine country, each destination is authentic to its place.



Golf Villas, Ascent at The Phoenician, Scottsdale



Lift at Park City, Utah



Alcove at Keystone, Colorado



Mill District at Healdsburg, California



Ka'upulehu, Hawaii



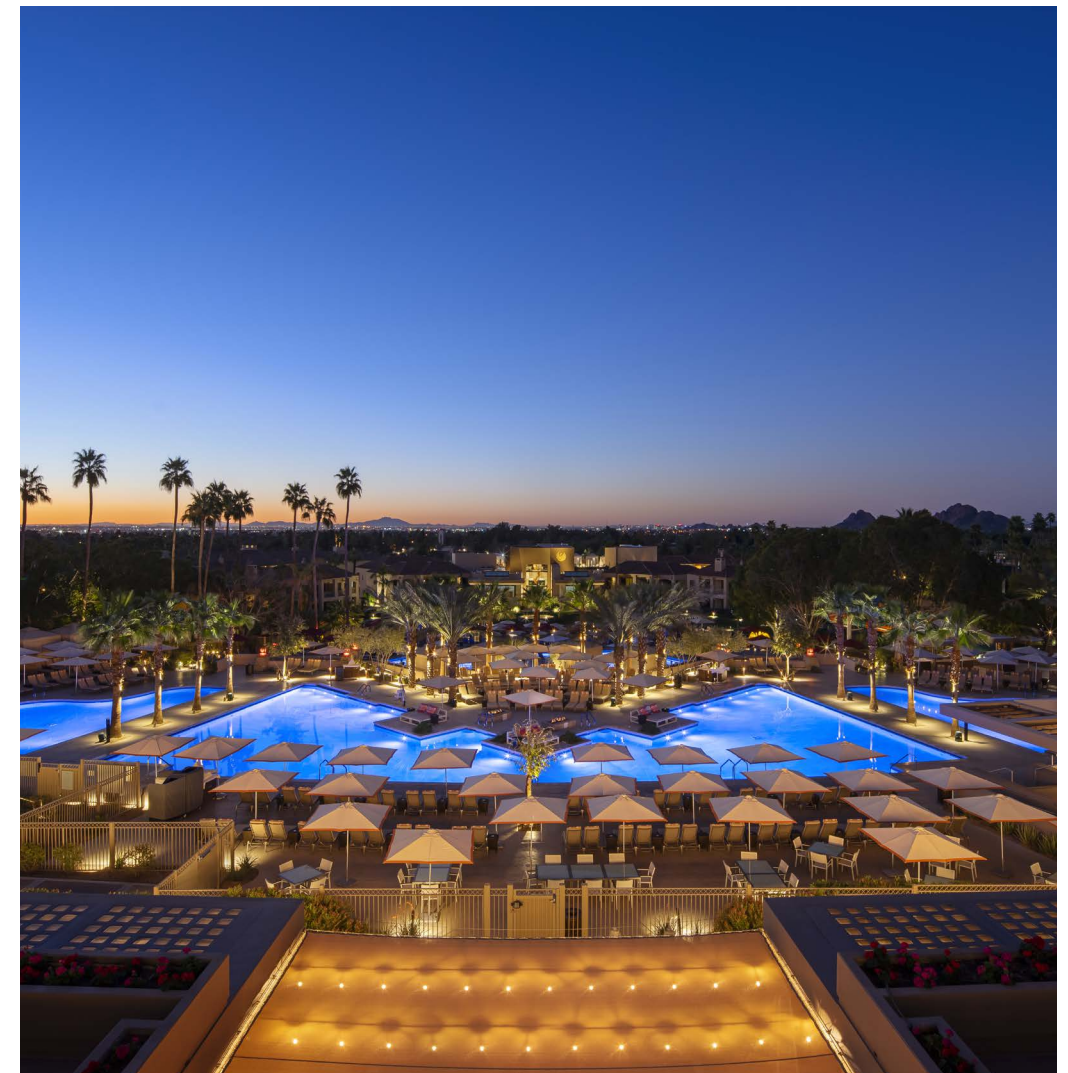
Half Moon Bay, Antigua

THE PHOENICIAN®



AN ICONIC RESORT DESTINATION

Ascent is located next to The Phoenician® — a world class hotel property on the edge of Arizona’s Sonora Desert. For decades, The Phoenician® has guided guests through an evolving journey distinctly designed to nurture, inspire, and rejuvenate. Offering multiple experiences on one diverse property, the resort’s award-winning Luxury Collection includes The Phoenician®, The Canyon Suites, The Phoenician® Suites, and a full range of world-class amenities.



SERENITY NEAR THE HEART OF SCOTTSDALE

Tucked against the backdrop of Camelback Mountain, Ascent is steps from the amenities of The Phoenician® and in close proximity to the boutiques, restaurants, and galleries of Old Town Scottsdale and Fashion Square.



A SPECTACULAR DESERT SETTING

An iconic resort destination, The Phoenician® recently completed an extensive renovation. The revitalized golf course, plus reinvented dining, fitness, pool, and tennis facilities offer a new experience of modern luxury.

Ascent homeowners have the opportunity to join the Phoenician® Amenity Access Program.

WORLD CLASS DINING

J&G Steakhouse, Mowry & Cotton, The Thirsty Camel, The Tavern, 19th Hole, and Afternoon Tea – From classic French cuisine, to extensive wine lists, hand-crafted cocktails, and poolside meals, The Phoenician® has innovative dining options to satisfy every type of palette.





ASCENT
AT THE PHOENICIAN®



Russ
Lyon

Sotheby's
INTERNATIONAL REALTY

www.ascentatthephoenician.com

Offered by Russ Lyon Sotheby's International Realty (AZ DRE #LC646682009). The residential project described herein (the "Residential Project") and the residential units within the Residential Project (the "Residential Units") are not owned, developed, or sold by Host Camelback I LLC or its affiliates, and Host Camelback I LLC does not make any representations, warranties or guaranties whatsoever with respect to the Residential Units, the Residential Project or any part thereof. [Re:play] ("[Developer]") uses the Phoenician® brand name and certain Phoenician® trademarks (collectively, the "Trademarks") in connection with the sales and marketing of the Residential Units in the Residential Project under a limited, non-exclusive license from Host Camelback I LLC. The foregoing license may be terminated or may expire without renewal, in which case neither the Residential Units nor the Residential Project will be identified as a Phoenician® branded project or have any rights to use the Trademarks. All renderings contained herein are merely intended for illustration purposes and not as a representation, warranty or guaranty of size, layout, finishes, views, or any other characteristics of the improvements or natural features depicted. Developer reserves the right to make any modifications, additions or withdrawals to any and all descriptions or depictions or any other materials pertaining to the Project, without prior notice. THE IMPROVEMENTS DESCRIBED OR DEPICTED HEREIN (INCLUDING, WITHOUT LIMITATION, ENTRY FEATURES, LANDSCAPING IMPROVEMENTS, AMENITIES, BUILDINGS, HARDSCAPE, FENCING OR WALLS OR THE LACK THEREOF), ARE PROPOSED ONLY AND NO WARRANTY IS GIVEN OR IMPLIED THAT THE IMPROVEMENTS WILL BE COMMENCED OR COMPLETED. ORAL REPRESENTATIONS CANNOT BE RELIED UPON AS CORRECTLY STATING AND SHALL NOT BE DEEMED TO BE REPRESENTATIONS OR WARRANTIES OF THE DEVELOPER. FOR CORRECT REPRESENTATIONS, MAKE REFERENCE TO THE DOCUMENTS THAT ARE REQUIRED BY ARIZONA REVISED STATUTES, 32-2181, et seq., TO BE FURNISHED BY A DEVELOPER TO A BUYER OR LESSEE. This is not an offer of real estate for sale or solicitation of an offer to buy, to residents of any state, province or other jurisdiction where the Project is not registered in accordance with applicable law or where such offering or solicitation would otherwise be prohibited by law. Void where prohibited. No sales will occur until permitted by the Arizona Department of Real Estate. All sales are conditioned upon the issuance by the Arizona Department of Real Estate and buyers' receipt and acceptance of a Disclosure Report for the Project (or applicable portions thereof). Only lot reservations will be accepted by Developer, and only as permitted by the Arizona Department of Real Estate, until the Disclosure Report for the development has been issued; provided, that Developer is under no obligation to accept lot reservations. Developer is committed to the letter and spirit of the policy for the achievement of equal housing opportunity.